



Webbs

Helping people move since 1994

Towpath Drive | Walsall | WS8 6FG

£230,000



Summary

** MID TERRACE FAMILY HOME ** POPULAR LOCATION CLOSE TO SHOPS** EARLY VIEWING ADVISED ** THREE BEDROOMS ** EN SUITE TO MASTER ** FAMILY BATHROOM ** SPACIOUS LIVING ROOM ** GUEST WC ** KITCHEN / DINER ** DRIVEWAY PARKING ** ENCLOSED REAR GARDEN ** UPVC DOUBLE GLAZED ** GAS CENTRAL HEATING **

Webbs Estate Agents have pleasure in offering this well-presented mid terraced home, situated in a popular location backing close to canal walks, shops and amenities and schools. Briefly comprising: hallway, WC, kitchen/diner and a spacious living room. To the first floor, the landing leads to three bedrooms, master with en suite, and a family bathroom. Externally there is a private driveway and an enclosed rear garden. EARLY VIEWING IS ADVISED!

Key Features

- MID TERRACE HOUSE
- 3 BEDROOMS
- WC, FAMILY BATHROOM
- KITCHEN / DINER
- ENCLOSED GARDEN
- CONVENIENT / POPULAR LOCATION
- MASTER WITH EN SUITE
- LIVING ROOM
- PARKING & GARAGE
- EARLY VIEWING ADVISED

Rooms and Dimensions

ENTRANCE HALL

WC

3'4" x 5'7" (1.04 x 1.71)

LIVING ROOM

9'11" x 13'11" (3.04 x 4.26)

KITCHEN / DINER

11'8" x 13'3" (3.56 x 4.05)

FIRST FLOOR LANDING

MASTER BEDROOM

10'11" x 9'1" (3.35 x 2.79)

EN SUITE SHOWER ROOM

6'2" x 6'9" (1.9 x 2.08)

BEDROOM TWO

13'5" x 9'4" (4.09 x 2.87)

BEDROOM THREE

13'5" x 9'5" (4.09 x 2.88)

BATHROOM

6'6" x 5'6" (2 x 1.7)

OUTSIDE

Identification Checks





Webbs
Helping people move since 1994



Webbs
Helping people move since 1994



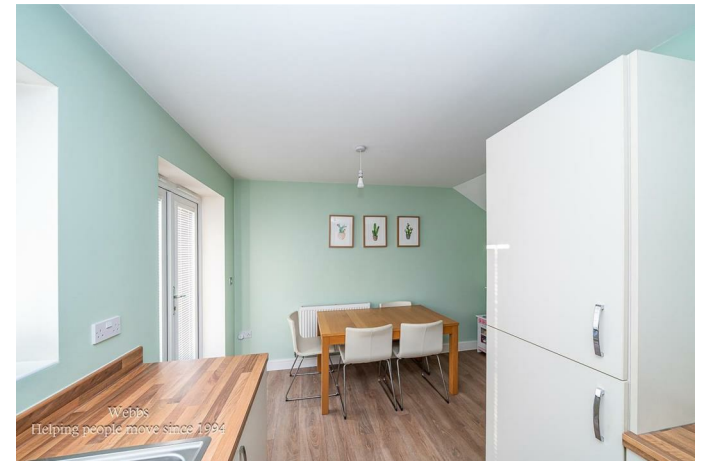
Webbs
Helping people move since 1994



Webbs
Helping people move since 1994



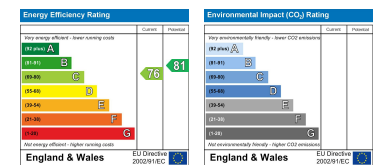
Webbs
Helping people move since 1994



Webbs
Helping people move since 1994



Webbs Estate Agents - endeavour to maintain accurate depictions of properties in Virtual Tours, Floor Plans and descriptions, however, these are intended only as a guide and purchasers must satisfy themselves by personal inspection.



28 High Street, Aldridge, Walsall, WS9 8LZ

Tel: 01922 288800 | Email: aldridge@webbestateagents.co.uk | www.webbestateagents.co.uk

